

NHP2010BD1 – IP CONFLICT ISSUE

The problem caused by the same IP address on your router and the wireless HomePlug NHP2010.

If the first 3 digits of the NHP2010 IP address are the same as the first 3 digits of your router IP address, then please change the default IP address of the NHP2010 and make it different from your router IP address.

For example, if your router default IP address is 192.168.1.1 which is the same as the NHP2010, then you can change the NHP2010 default IP address to 192.168.2.1

CHANGE THE IP ADDRESS OF THE NHP2010

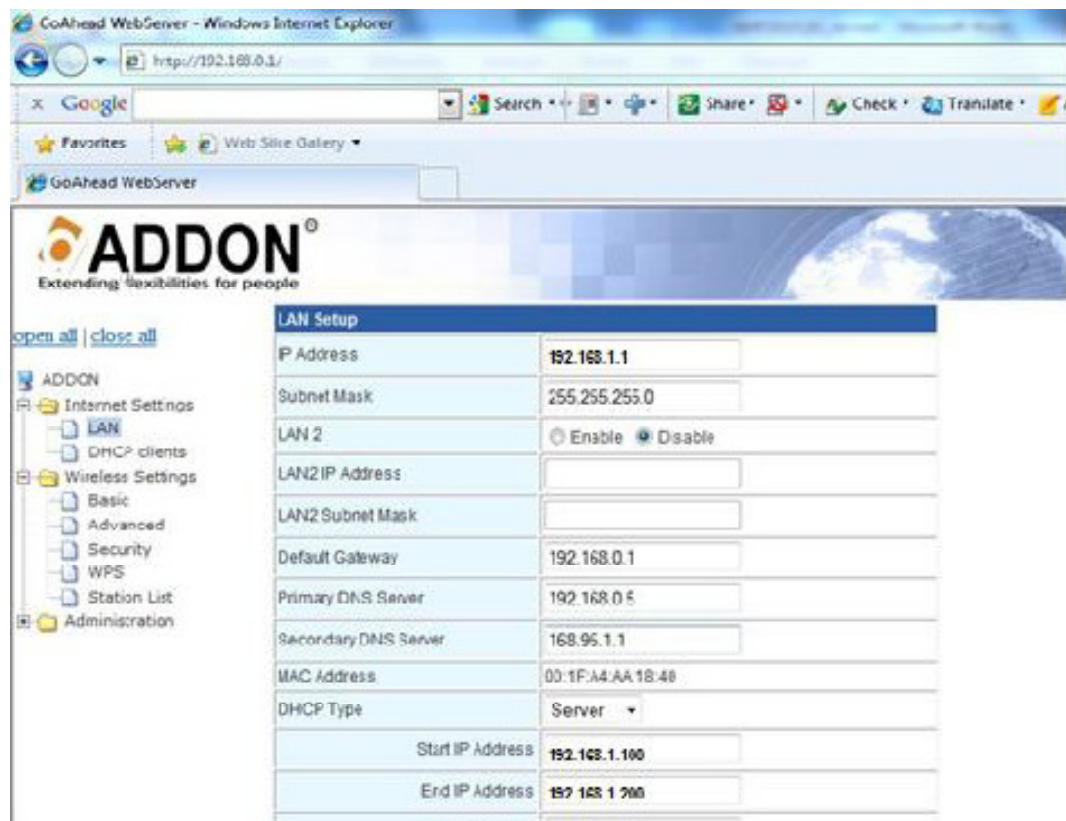
1. Unplug from the wall socket the wired HomePlug connected to the router (HP2000 or HP2100).
2. Connect the NHP2010 to your PC by Ethernet cable and plug it into a power socket.
3. Open your web browser and type 192.168.1.1 on the address bar and press enter. You should be able to login to the NHP2010 management page (username: **admin** / password: **admin**)

Note: If you can't access to the NHP2010 wireless HomePlug at 192.168.1.1, please try to reset the device to default by pressing and holding the reset button (a little hole) for about 10 seconds (the device must be plugged in the power socket with the power light ON)

Note 2: If, after you have reset the device, you are still not able to login to the NHP2010 management page, please follow the instruction **CHANGE THE IP ADDRESS MANUALLY (page 2)**

4. Click on Internet settings->LAN.
5. Change the third digit 1 to 2 in IP address, Start IP Address and End IP Address boxes (Img. 1).

Img.1



6. Click on Apply to save the changes
7. Unplug the wireless HomePlug NHP2010 and remove the Ethernet cable that connect it to your computer
8. Plug the wired Homeplug connected to the router (HP2000 or HP2100) Plug the wireless HomePlug NHP2010

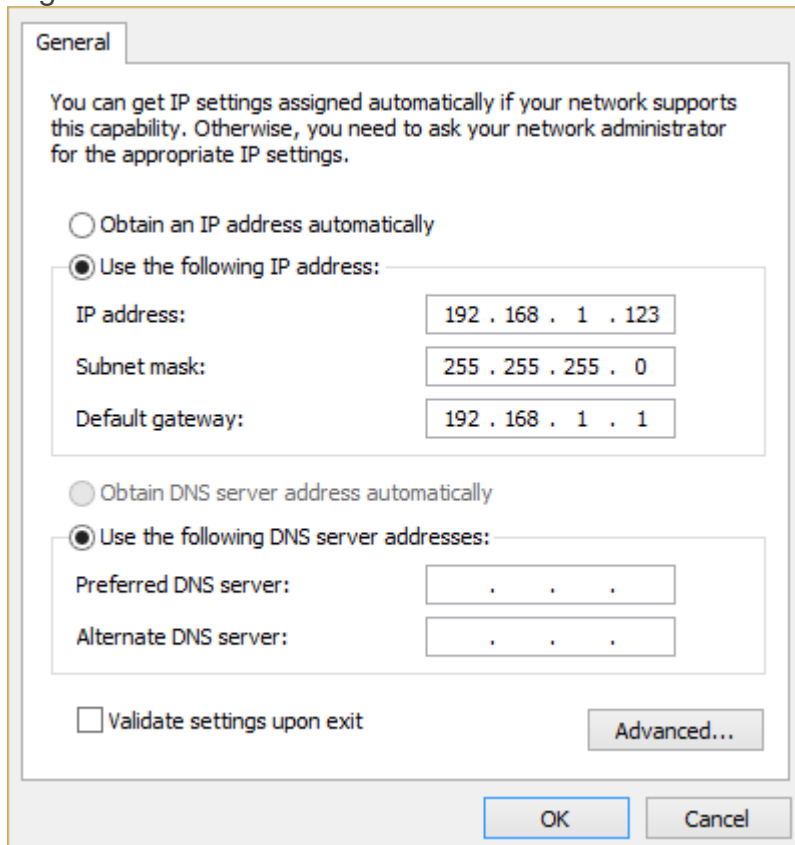
CHANGE THE IP ADDRESS MANUALLY

Follow this instructions only if you have reset the NHP2010 and you are still not able to reach the NHP2010 management page at 192.168.1.1

1. Unplug from the wall socket the wired HomePlug connected to the router (HP2000 or HP2100).
2. Connect the NHP2010 to your PC by Ethernet cable and plug it into a power socket.
3. Turn ON your computer and follow the instructions:
4. Open the Network Connections:
 - On **Windows XP**: Click Start -> Control Panel -> Network and Internet Connections -> Network Connections
 - If you have **Windows 7** or **Windows 8**: Control Panel -> Network and Internet -> Network and Sharing Center -> Change adapter settings (on the left)

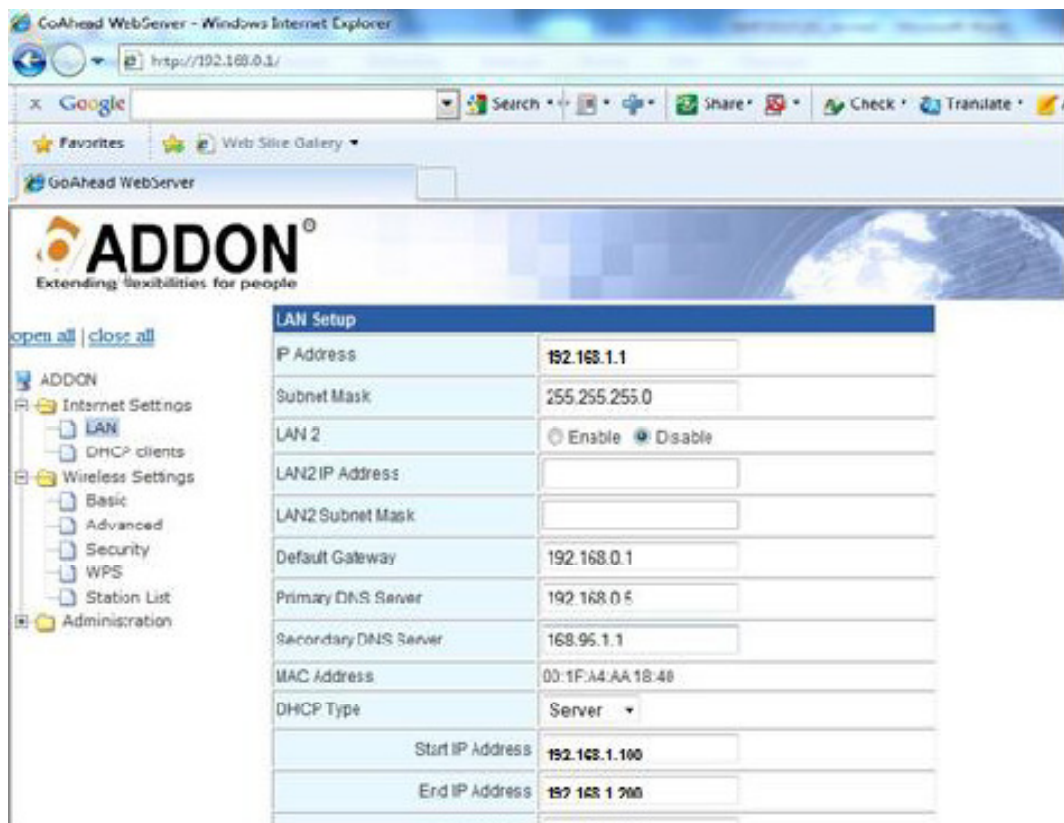
5. In the **Network Connections** window, right-click your network connection, and then click **Properties**.
6. On the **General** tab, under **This connection uses the following items**, click
 - On **Windows XP: Internet Protocol (TCP/IP)**, and then click **Properties**.
 - On **Windows 7 or Windows 8: Internet Protocol Version 4(TCP/IPv4)**, and then click **Properties**.
7. In the **Internet Protocol (TCP/IP) Properties** dialog box, configure your network settings like the **Img. 2**

Img. 2



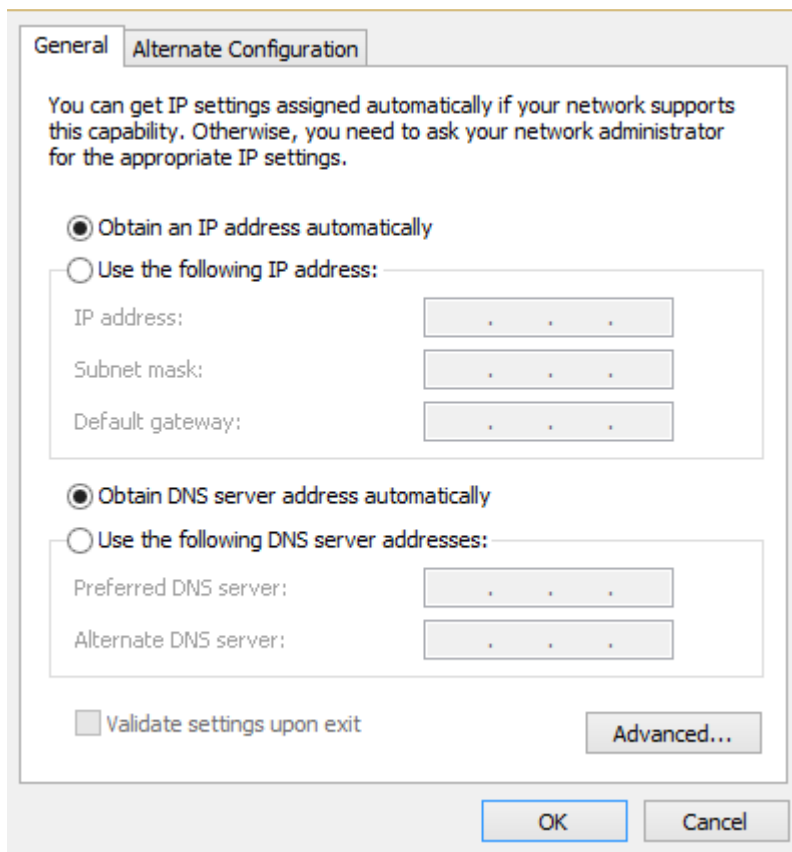
8. Then click **OK**.
 - On Windows XP: Click **Close** to return to the Network Connections window.
 - On **Windows 7 or Windows 8**: Click again on **OK**
9. Open your web browser and type 192.168.1.1 on the address bar and press enter. You should be able to login to the NHP2010 management page (username: **admin** / password: **admin**)
10. Click on Internet settings->LAN.
11. Change the third digit 1 to 2 in IP address, Start IP Address and End IP Address boxes (Img. 3).

Img.3



12. Click on Apply to save the changes
13. Close the internet browser
14. Go back to the Network Connections (see point 4, 5 and 6)
15. Click on **Obtain an IP Address automatically** (Img. 4)

Img. 4



16. Then click **OK**.

- On Windows XP: Click **Close** to return to the Network Connections window.
- On **Windows 7** or **Windows 8**: Click again on **OK**

17. Unplug the wireless HomePlug NHP2010 and remove the Ethernet cable that connect it to your computer

18. Plug the wired Homeplug connected to the router (HP2000 or HP2100)

19. Plug the wireless HomePlug NHP2010